

OYSTA

Oysta Lite



- One-touch SOS Button
- GPS "Safety Zones"
- Two-way voice
- Cradle for easy charging
- Discreet size & style
- Waterproof - works anywhere

Introducing Oysta Lite

The Oysta Lite is the latest in telecare technology, a one-button telecare device with sophisticated location finding and secure, reliable communication for safety anywhere, anytime.

If lost, distressed or in need of help, the VIP can easily start an SOS call. Telecare service providers can regularly check in with the wearer, be alerted of the VIP's location, and communicate over a built-in speakerphone.

Reduces the embarrassment of needing help from strangers – the VIP is quickly connected with family, friends or a help centre.

Designed for vulnerable people who desire:

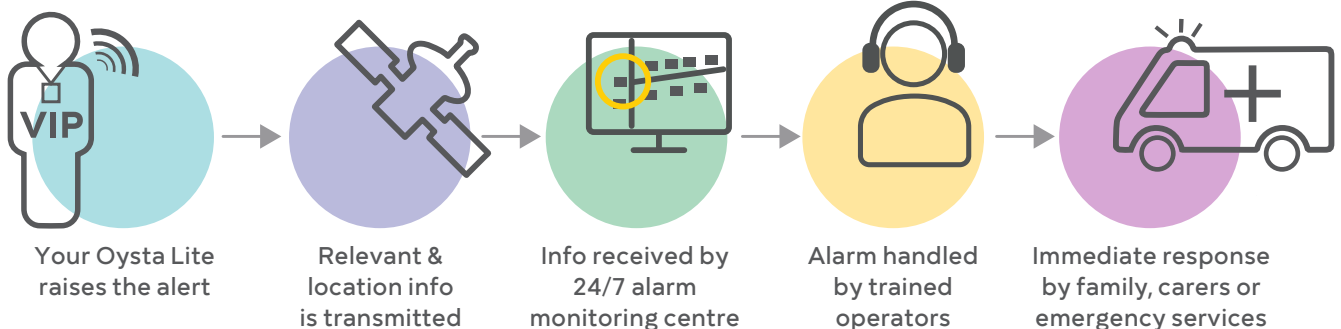
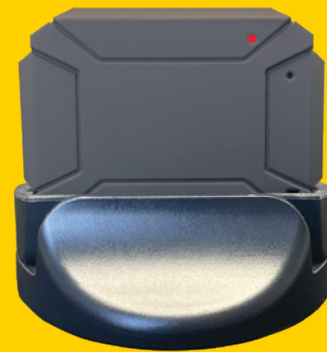
- freedom and independence
- protection at home, at the shops, in the park
- a no-fuss way to get assistance
- discreet look – no-one will know
- to give reassurance to loved ones & carers

Carried in a pocket, on a keyring, or on a lanyard, the Oysta Lite is a small versatile solution. Ready to use as soon as it is turned on, the Oysta Lite arrives with an easy-to-use charging cradle.

Keeping VIPs safe

Oysta's telecare solutions proved a valuable tool in keeping vulnerable people safe, particularly reducing risk to people who may wander and subsequently go missing or get lost.

IntelliCare puts measures in place to limit risk and to summon assistance if necessary. Enabling families, carers and social care professionals to trace or track a VIP when there is a real concern they could go missing, IntelliCare provides everyone within the VIPs care network with the means to locate the missing person quickly and safely.



Key features

One Touch SOS Button

If the user is in distress or just needs peace of mind, the SOS button gets help quickly. The Oysta Lite will send your details to the control room or contact and opens a two-way voice in hands-free.

Safety Zones

Simply draw safe zones on the map to get care alerts if the user leaves or enters those areas, anytime or during specific times of the day or night.

Status Alerts

Know when the device is switched on/off and charging/battery levels. Get reminders or alerts if the device needs charging. An optional "no activity" feature to detect if the device is not being worn or used.

Location Updates

When help is needed, carers receive accurate location information immediately to get help to the right place. The IntelliCare™ platform gives authorised carers a map of the device location and recent travel.

Voice

2 way voice communication available with a clear loud-speaker.

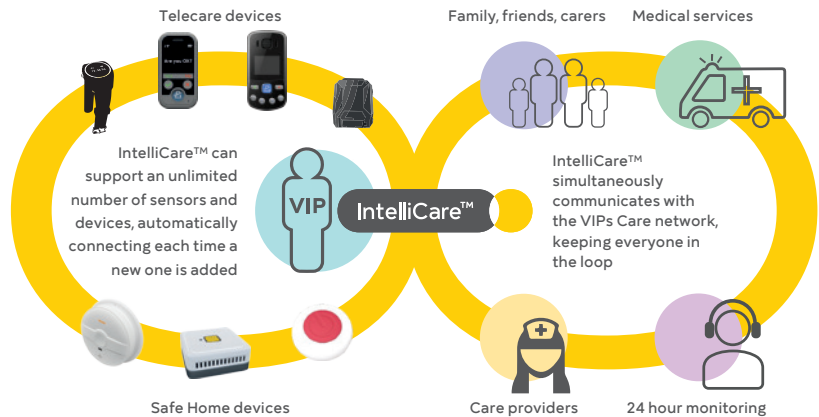
Easy charging

Simply drop the Oysta Lite into the charging cradle and it's ready to go when you are. In normal use a battery lasts all day and more.

IntelliCare the power behind the Oysta Lite

Oysta's mobile telecare solutions are all supported by IntelliCare, Oysta's intelligent cloud-based platform.

Reliable and powerful, IntelliCare allows every home sensor and personal device to communicate independently. Managing alerts and communications for the VIP, IntelliCare collates the data generated by the telecare solutions, to provide the care network with a clear picture on the VIPs well-being.



The Oysta Lite is a small device, enabling a VIP to have discrete access to 24/7 support.

SPECS	
Size	52*38*17.5mm
Weight	50g

FEATURES	
IP Rating	IP67
Speaker	Yes
Microphone	Yes

TECH	
Signal	2G
GSM Freq.	Quad band GSM: 850/900/1800/1900Mhz
GPS	GPS/ AGPS / LBS/ WIFI positioning, Ublox-7020 chip.
Battery	Li-Polymer 420mah
Operating temp	-25°C ~ +65°C
Display	Status LED
Sensors	Accelerometer



OYSTA

Version: Jun2021

OYSTA TECHNOLOGY

Depslade Barn, Pury Hill Business Park, Towcester, NN12 7 LS, UK.

Tel +44 (0) 1295 530 101

Email info@oysta-technology.com

www.oysta-technology.com

